

Auteur ou collectivité : Exposition universelle. 1851. Londres

Auteur : Day & son (Londres)

Titre : Great exhibition 1851 [plans]

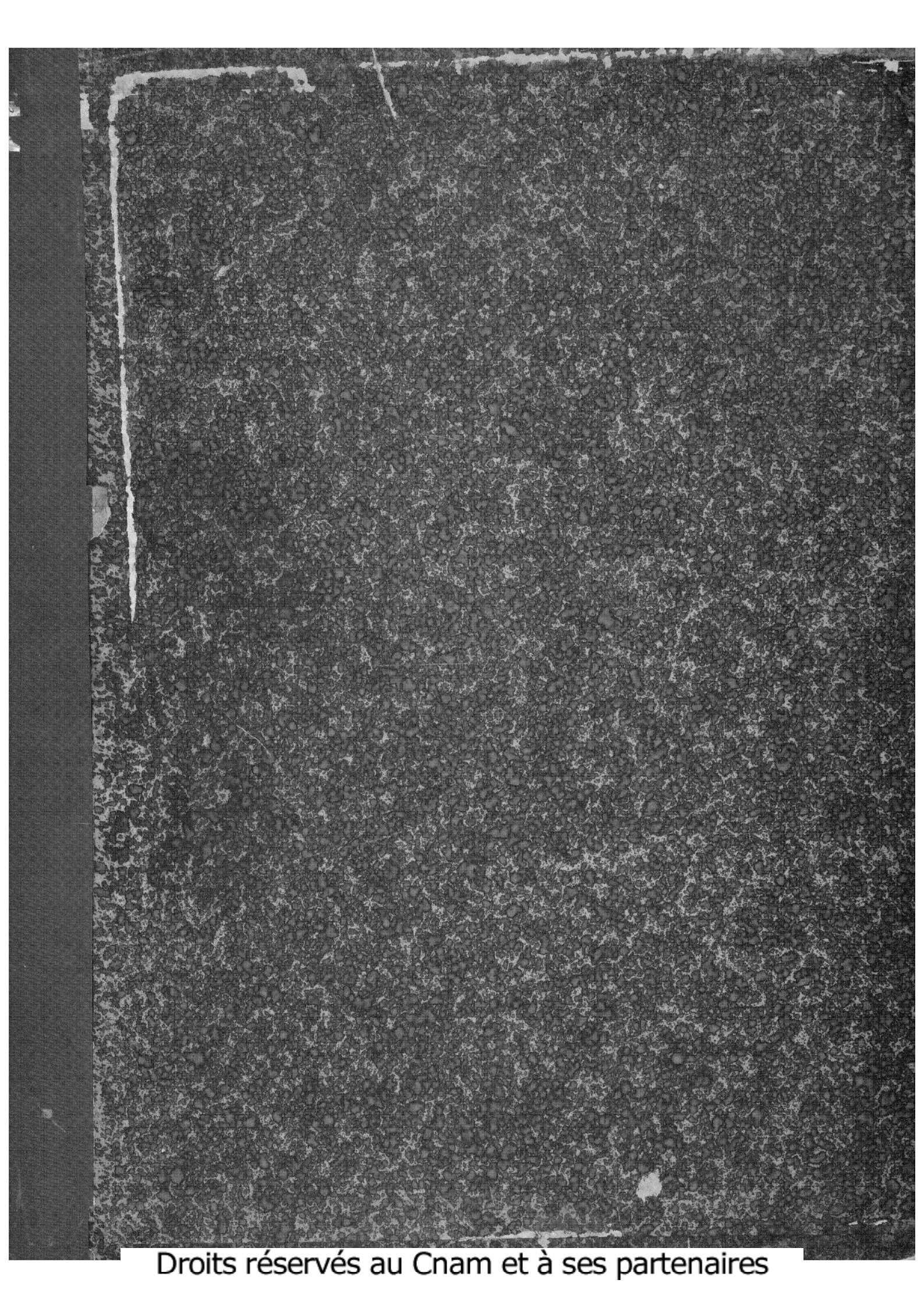
Adresse : [London?] : [s.n.], [1851?]

Collation : 1 vol. (16 f. de pl.) : ill. en noir et en coul., plans ; 67 cm

Cote : CNAM-BIB Gd Fol Xae 1 Res

Sujet(s) : Exposition internationale (1851 ; Londres) -- Ouvrages illustrés ; Constructions pour expositions -- Dessins et plans

URL permanente : <http://cnum.cnam.fr/redir?GDFOLXAE1>

The image shows a dark, heavily textured surface, likely the cover of an old book. The texture is grainy and uneven, with many small, light-colored specks and fibers visible against the dark background. A thin, white, irregular border runs along the left edge of the cover, possibly indicating a hinge or a piece of tape. The overall appearance is aged and worn.

Droits réservés au Cnam et à ses partenaires

LIST OF LITHOGRAPHS.

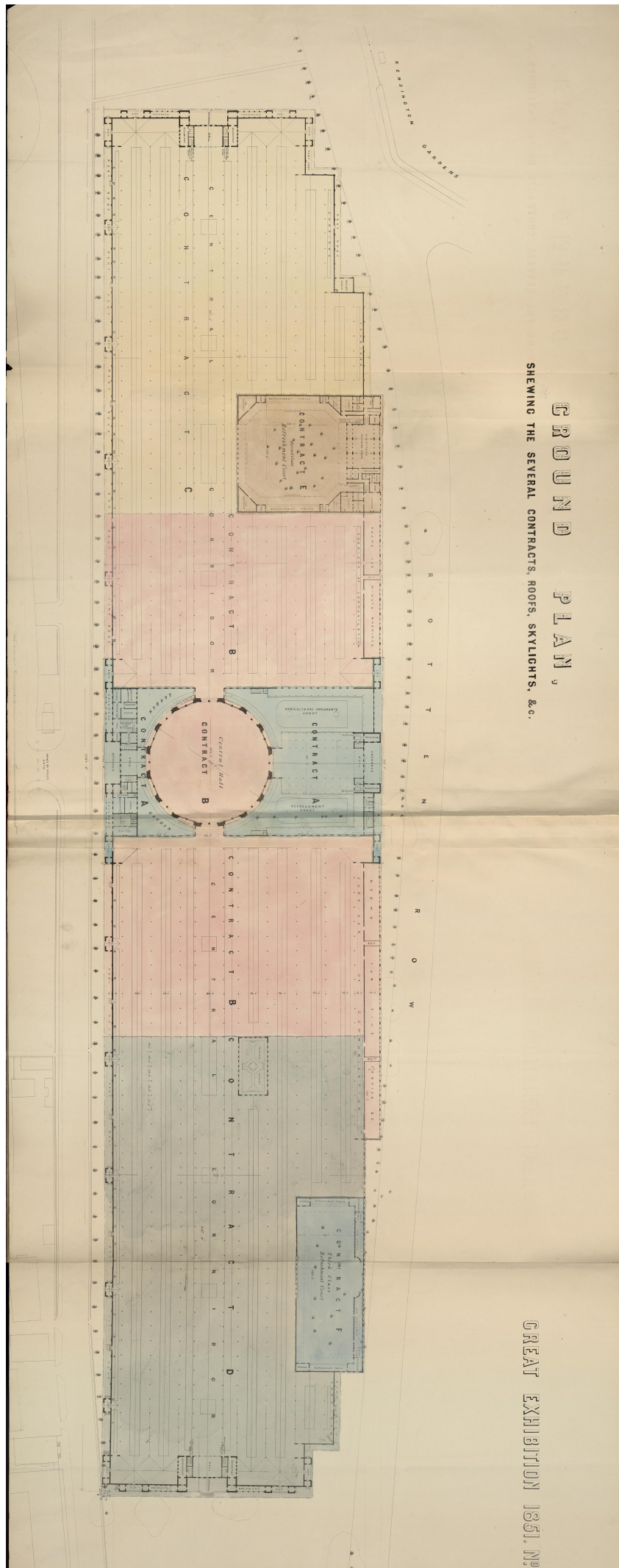
- No. 1. Ground Plan, shewing the several Contracts, Roofs, Skylights, &c.
2. Plans of Central Portion of South Front. Contract A.
3. Portions of South Elevation. Contracts A. B. C. D.
4. Elevations and Sections of Central Portion of South Front. Contract A.
5. Plans, Elevations, and Sections of Central Hall. Contract B.
6. Covering of Central Hall. System No. 1. Contract B.
7. Covering of Central Hall. System No. 2. Contract B.
8. Covering of Central Hall. System No. 3. Contract B.
9. Plans, Elevations, and Sections of the Fountain Court. Contract D.
10. Plans, &c. of Second Class Refreshment Court. Contract E.
11. Do. do. do. Contract E.
12. Plans, &c. of the Third Class Refreshment Court. Contract F.
13. Plans, Elevations and Sections of East and West Ends. Contracts C. & D.
14. Details of Roofs. Contracts A. B. C. D.
15. Do. do. Contracts A. B. C. D.
16. Details of Brick-work of the North, South, East, and West Fronts. Contracts A. B. C. D. E. F.

NOTE.—The lithographs have been prepared to convey general information as to the details, dimensions, and character of the works proposed, but are not to be assumed as constituting the whole of the contract drawings, or as absolutely accurate.

The Contract Drawings may be seen on application to the Secretary of the Building Committee, at the Palace of Westminster, on and after July 1st, 1850.

The Bearer of this Voucher will receive a copy of the Bills of Quantities,
and the detailed Specifications, on application at No. 1, Old Palace Yard, on
and after July the 1st, 1850.

Gd Fo Xae 1

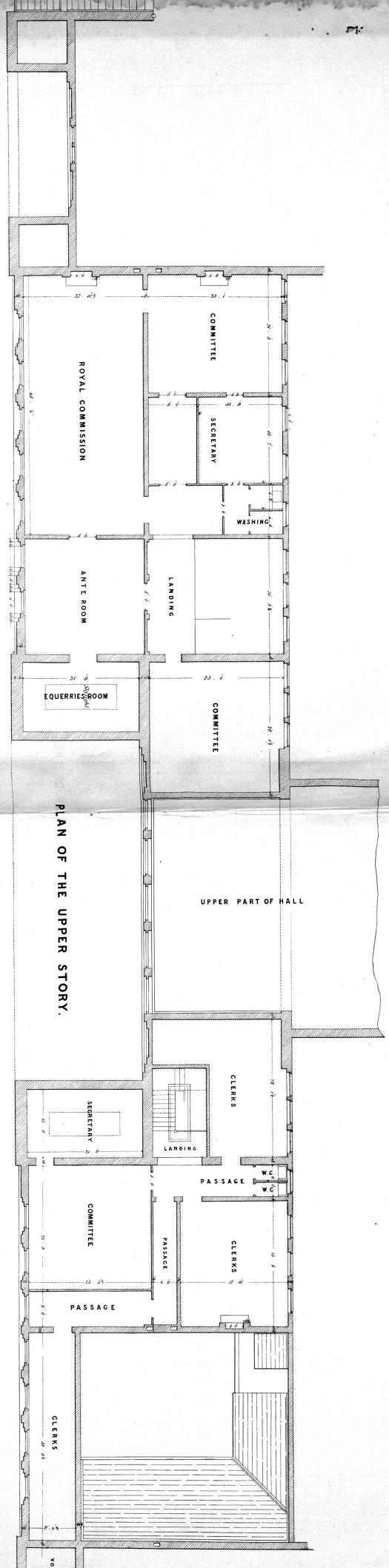


CRYSTAL PALACE
GROUND PLAN
SHOWING THE SEVERAL CONTRACTS, ROOFS, SKYLIGHTS, &c.

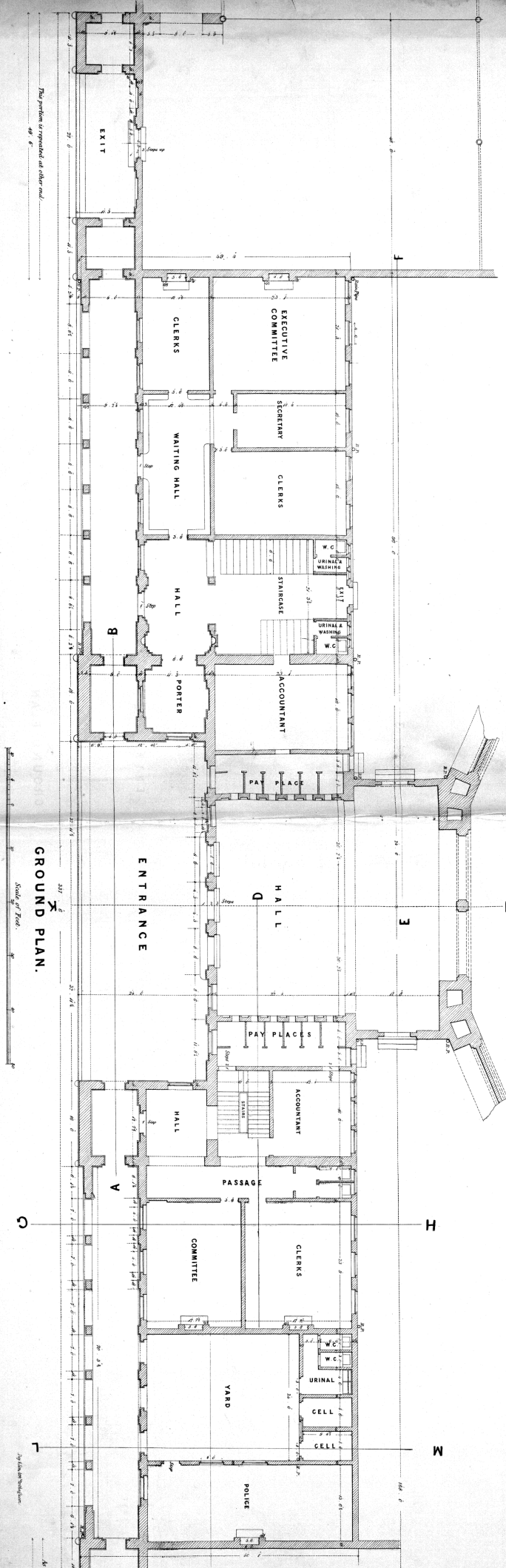
GREAT EXHIBITION 1851. No. 1

CENTRAL PORTION OF SOUTH FRONT.

GREAT EXHIBITION 1851. N^o 2.
CONTRACT A.

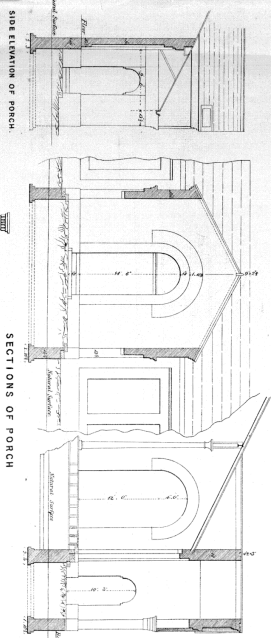


PLAN OF THE UPPER STORY.

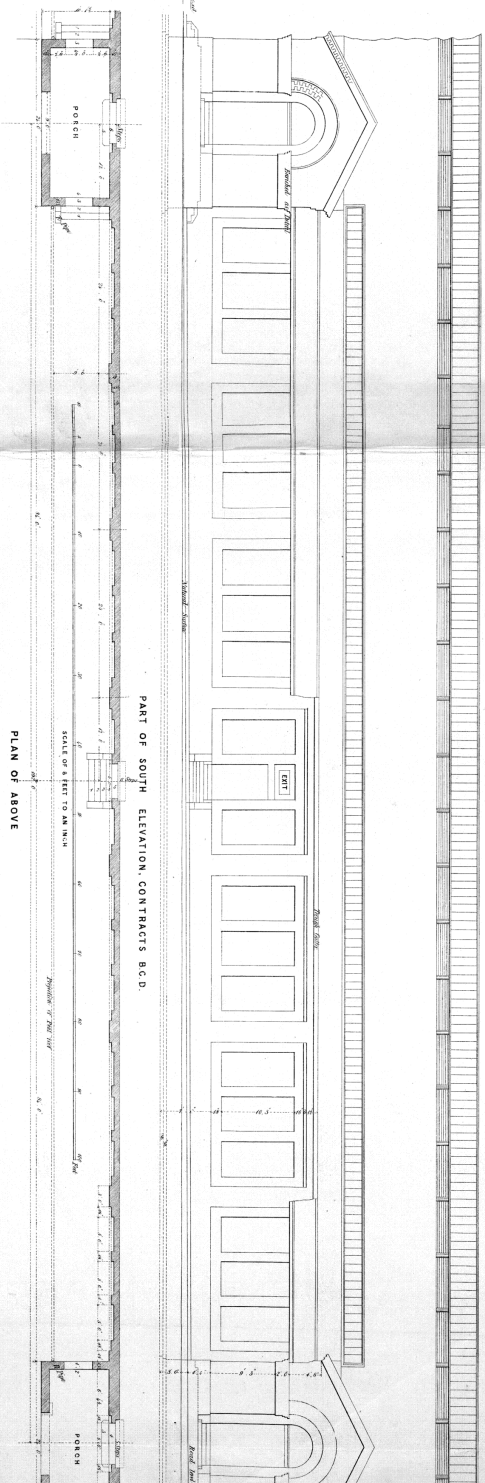
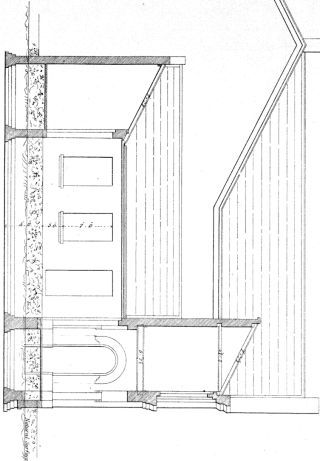


GROUND PLAN.

GREAT EXHIBITION 1851. No 3
 CONTRACTS A.B.C.D.

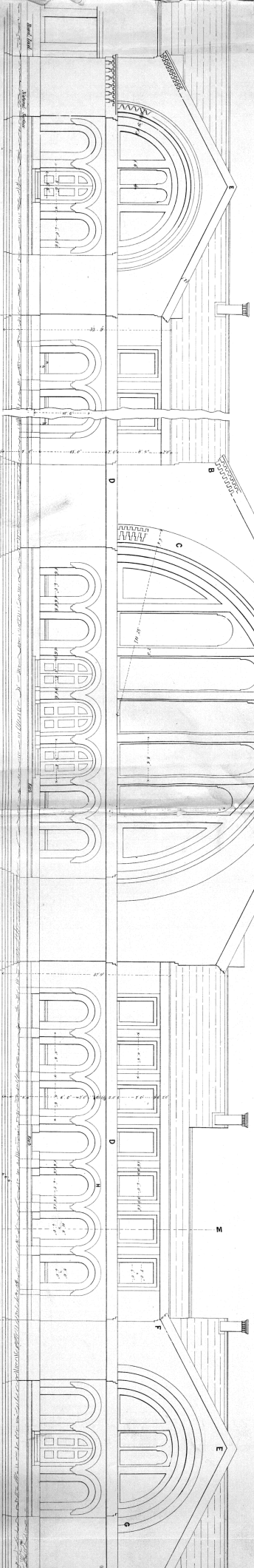


SECTION ON THE LINE L. M.



PLAN OF ABOVE

Note: The Elevation of the South Front is of a similar character to the South.

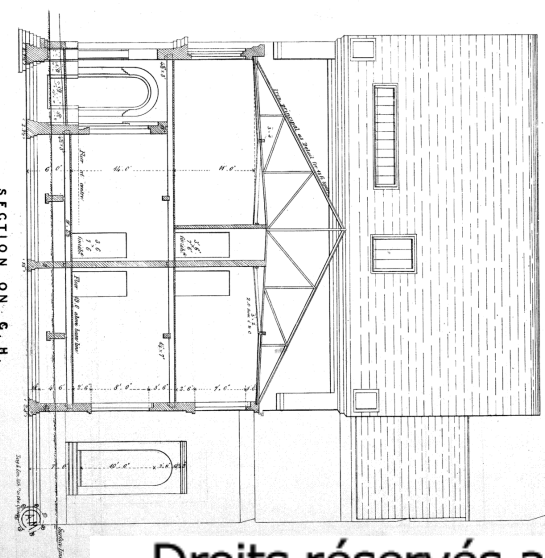
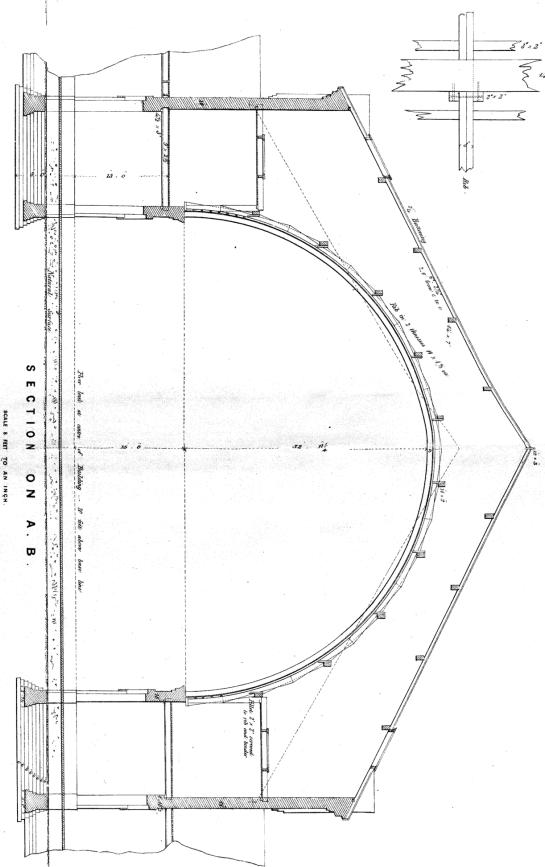
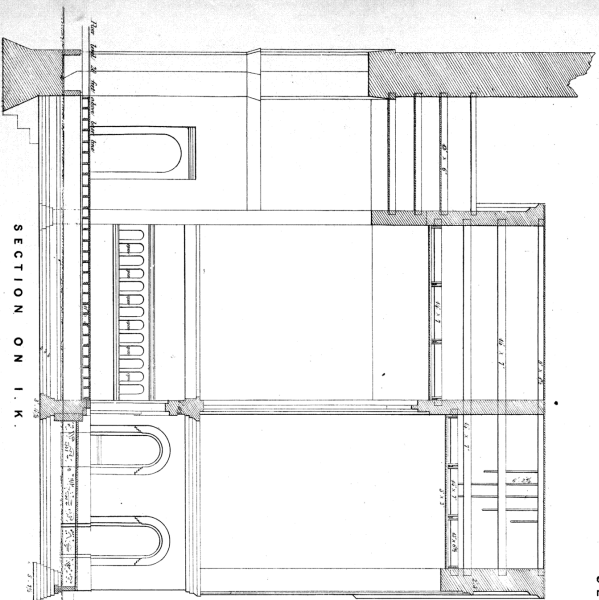
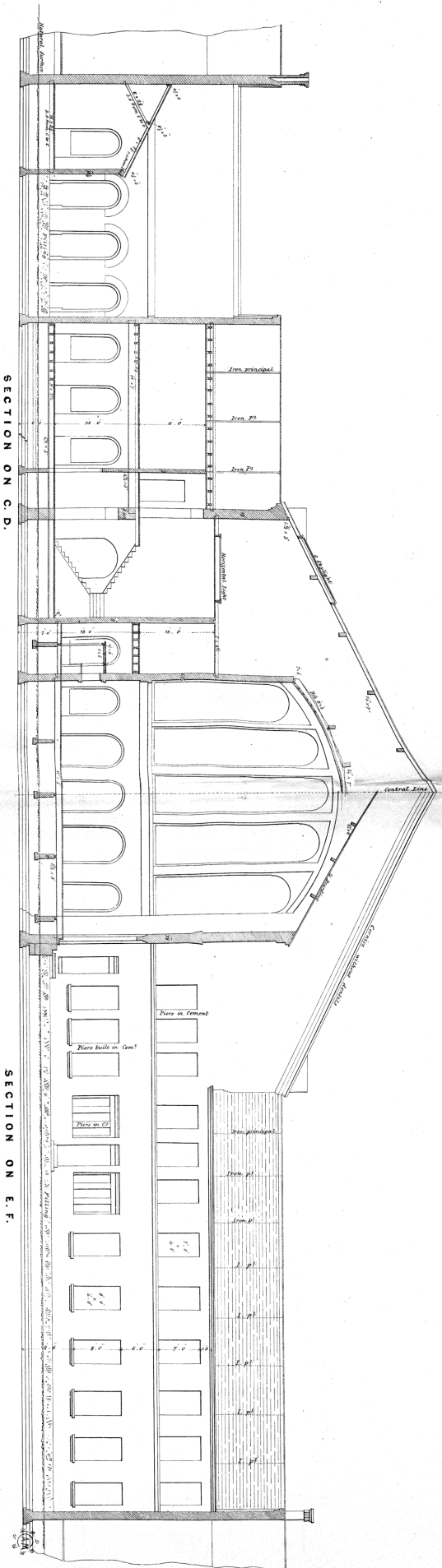


THIS PORTION TO BE THE SAME LENGTH AS FROM Y TO Z. SEE PLAN FOR OPENINGS.

CENTRE OF SOUTH FRONT
 CONTRACT A.

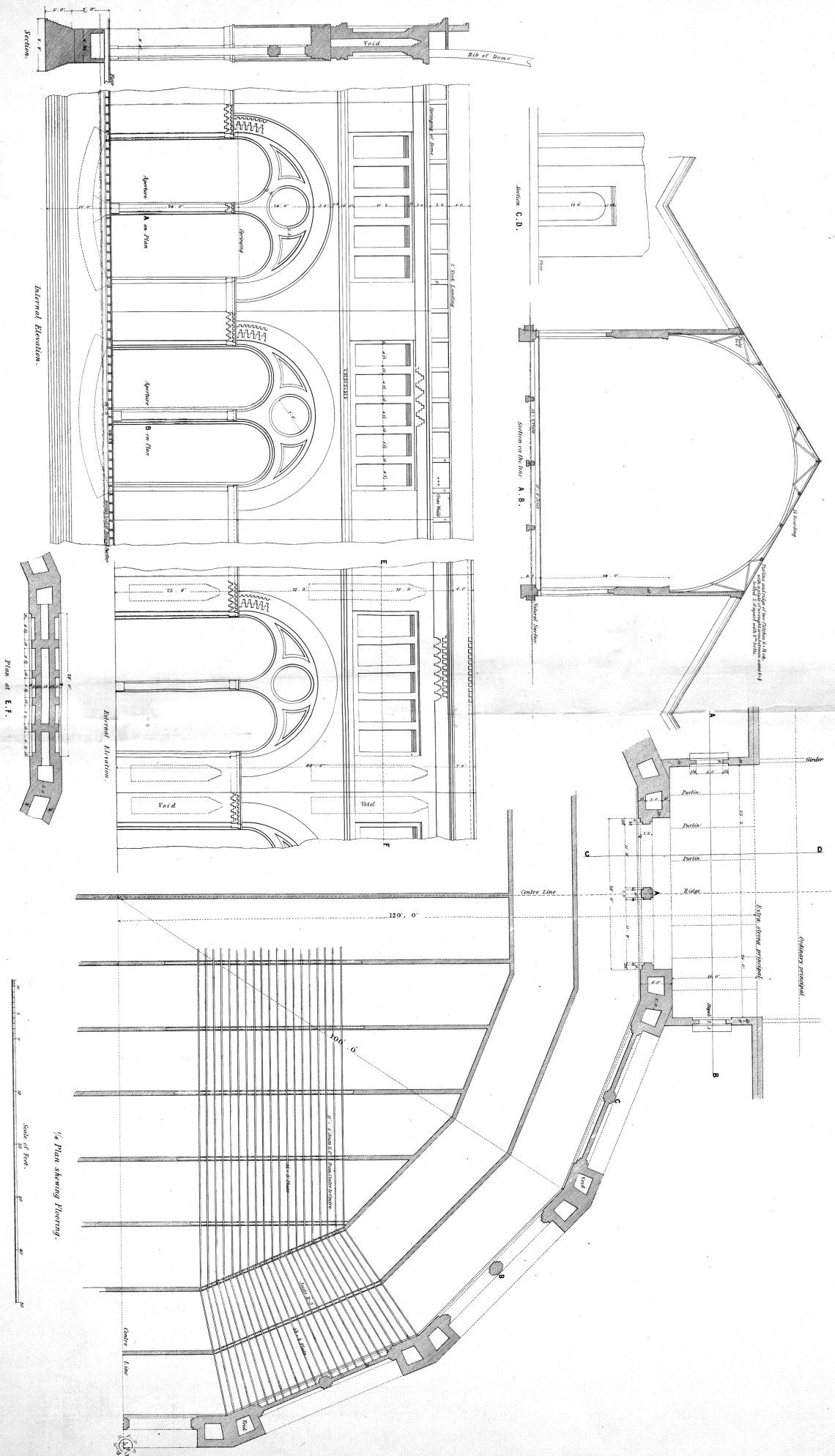
GREAT EXHIBITION 1851. N^o 4.
CONTRACT A.

CENTRAL PORTION OF SOUTH FRONT.

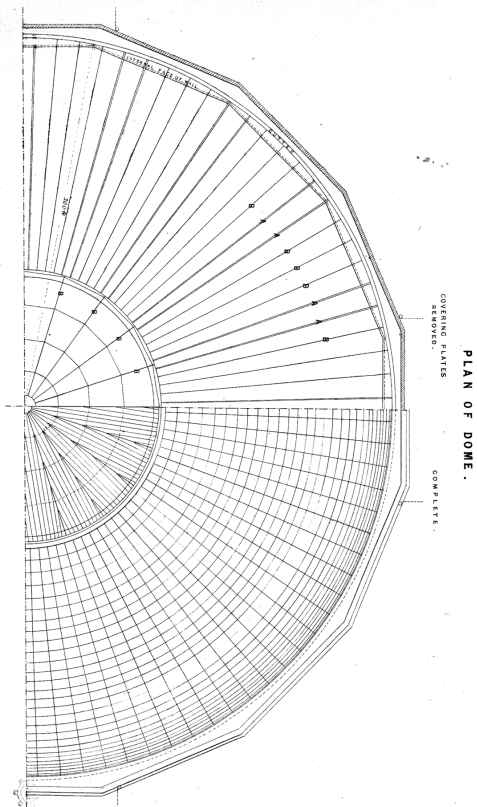
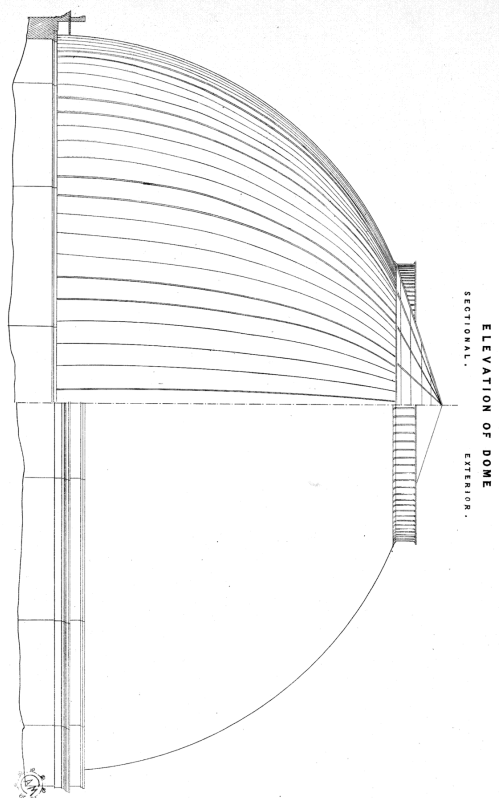


GREAT EXHIBITION 1851. No. 5. CONTRACT B.

CENTRAL HALL.

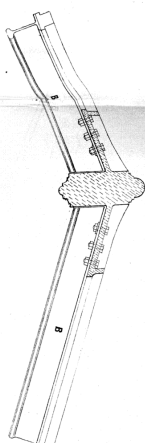


GRAND EXHIBITION 1851. N^o 6. **CONTRACT B.**

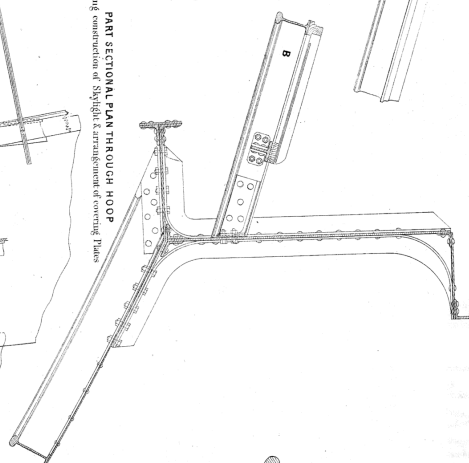


SCALE FOR ELEVATION PLAN SECTION 1/100th of an Inch.

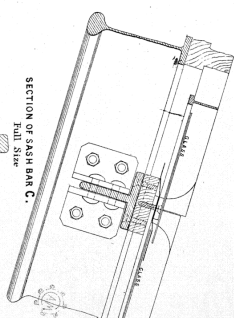
SYSTEM N^o 1. **SECTIONAL ELEVATION OF APEX OF SKYLIGHT**



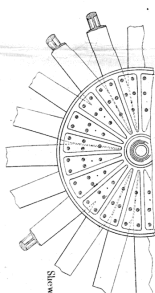
SECTION THROUGH HOOP Showing Junction with Rib & Main Skylight Bar



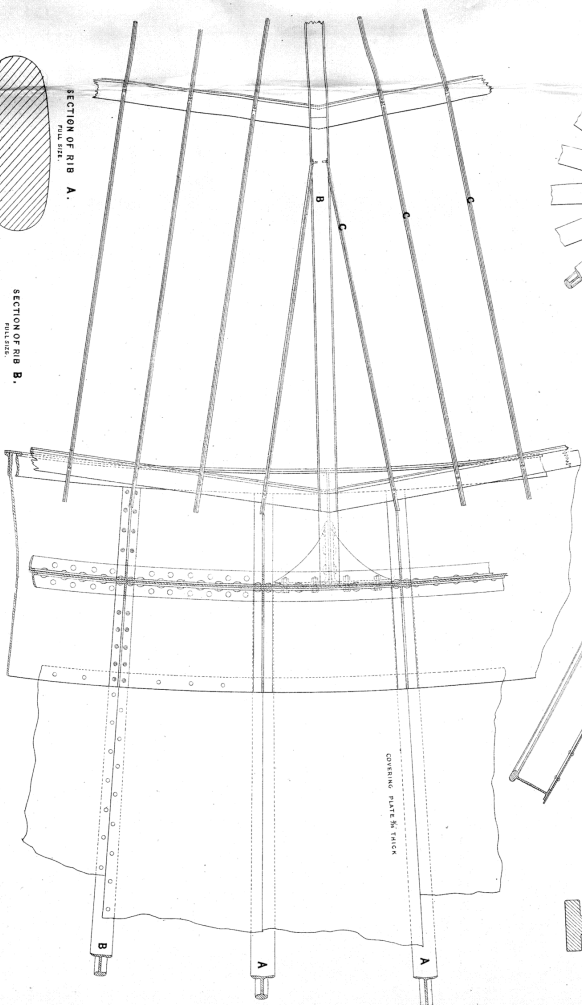
SECTION THROUGH PORTION OF SKYLIGHT Showing Joints to the Roof.



PLAN OF APEX OF SKYLIGHT



PART SECTIONAL PLAN THROUGH HOOP Showing Construction of Skylight & Arrangement of Covering Plates



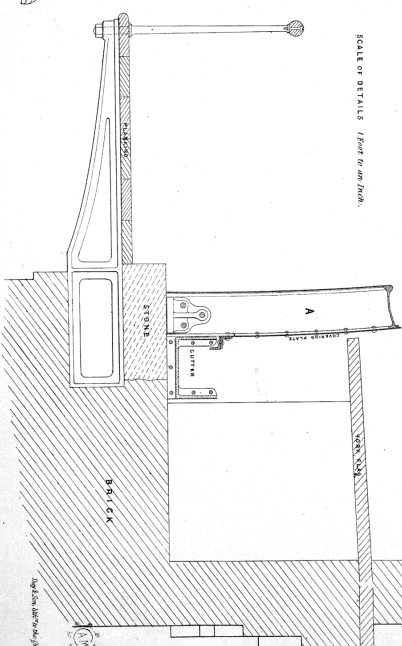
SECTION OF RIB A. FULL SIZE.



SECTION OF RIB B. FULL SIZE.



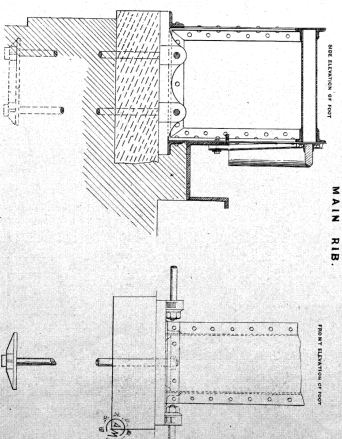
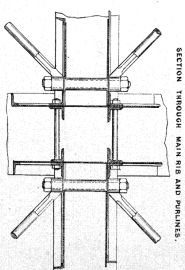
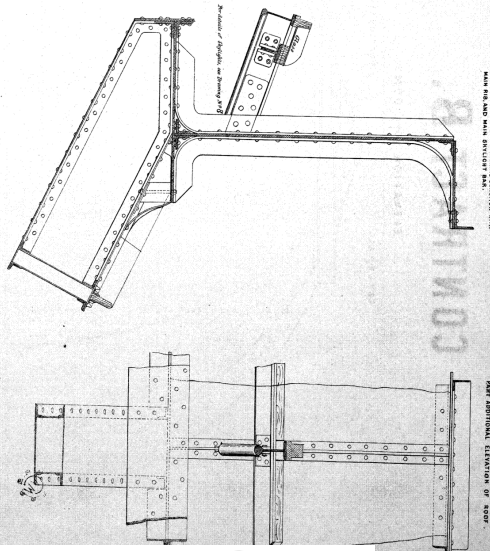
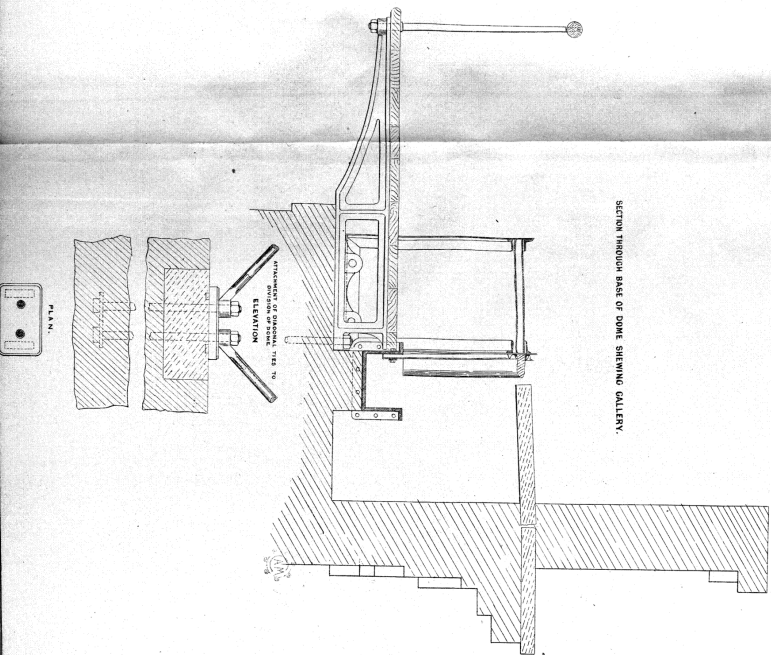
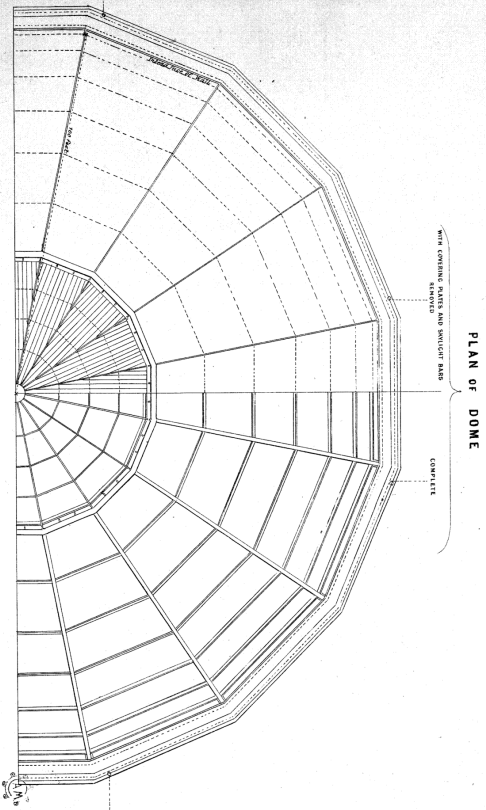
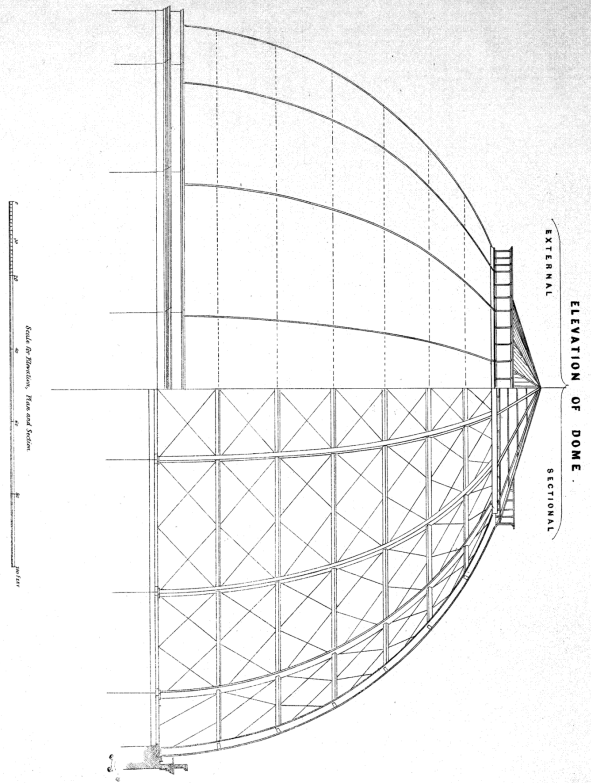
SECTION THROUGH BASE OF DOME, SHOWING GALLERY



SCALE OF DETAILS 1/100th of an Inch.

GREAT EXHIBITION 1851. No 7. CONTRACT B.

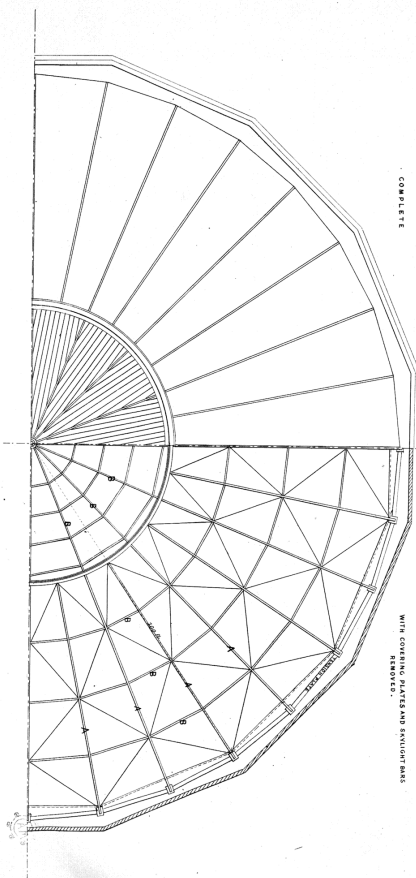
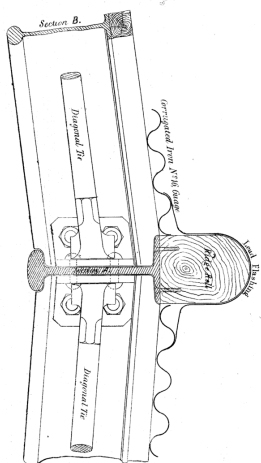
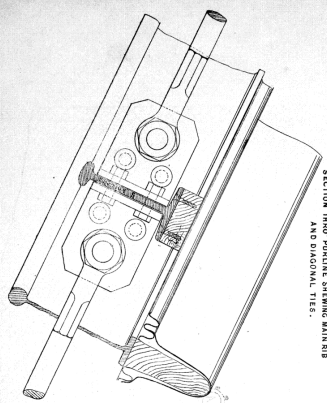
COVERING TO CENTRAL HALL.
SYSTEM, No 2.



Droits réservés au Cnam et à ses partenaires

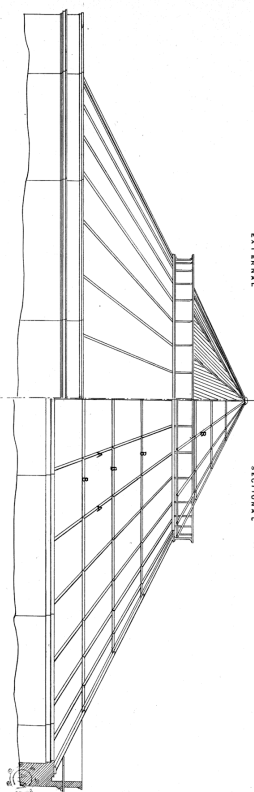
GREAT EXHIBITION 1851. N^o 8. CONTRACT B.

COVERING TO CENTRAL HALL,
SYSTEM N^o 3.



COMPLETE

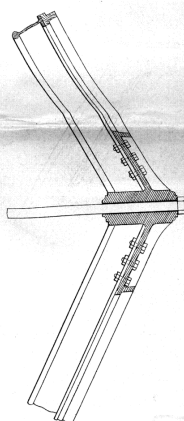
WITH CORRODING PLATES AND SKYLIGHT RIBS REMOVED.



EXTERNAL

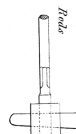
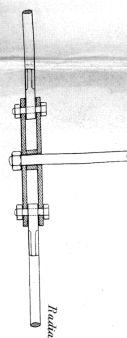
INTERNAL

ELEVATION OF DOME

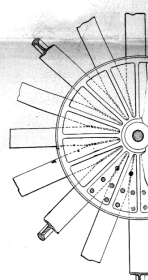


SECTION THROUGH HOOF

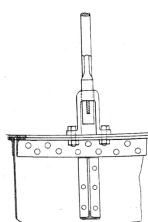
Showing form of skylight junction with Main Rib & Radial Rods



PLAN OF APEX OF SKYLIGHT.

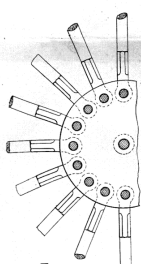


PLACE OF JUNCTION OF RADIAL ROD WITH HOOF.



PLAN OF FOOT OF MAIN RIB

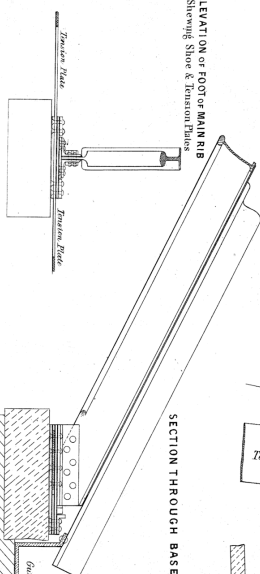
Showing Shoe & Tension Plates



PLAN OF CENTRE CONNECTION OF RADIAL RODS

ELEVATION OF FOOT OF MAIN RIB

Showing Shoe & Tension Plates



SECTION THROUGH BASE OF CONE.

SCALE OF DETAILS ONE FOOT TO AN INCH.

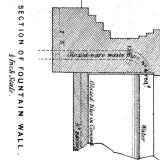
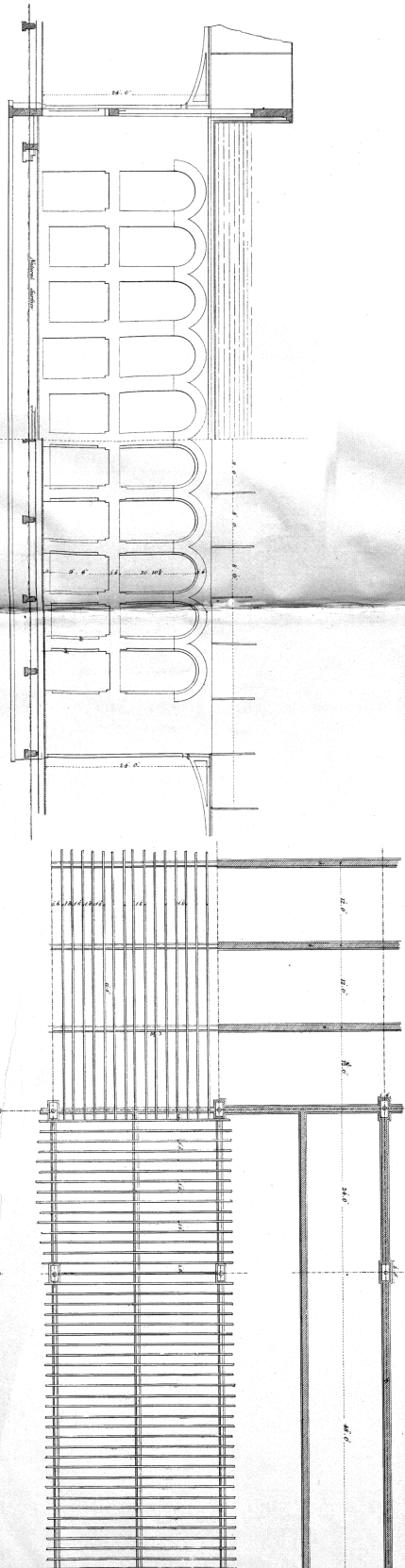
FOR SECTION OF MAIN RIBS PURLINES & SKYLIGHT RIBS SEE N^o 6.

GALLERY

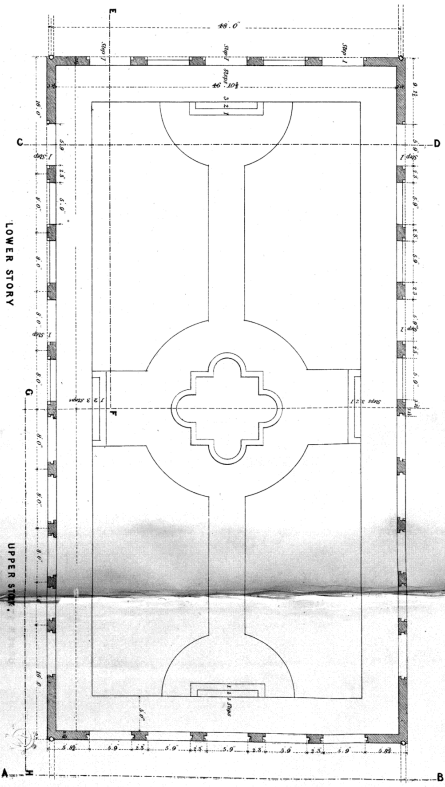
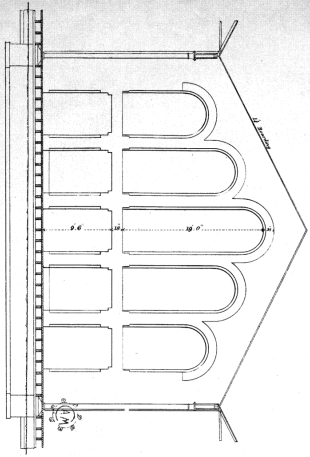
PLANS, ELEVATIONS, SECTIONS, AND DETAILS OF THE FOUNTAIN COURT.

GREAT EXHIBITION 1851. N
CONTRACT D.

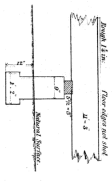
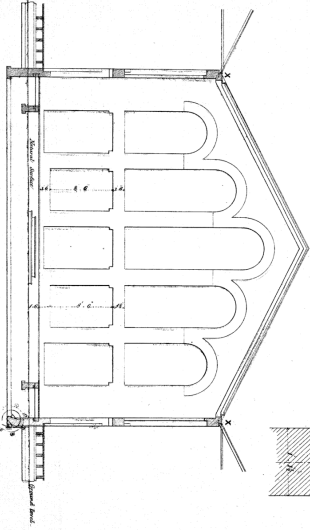
DETAIL OF FLOORING APPLYING GENERALLY.



SECTION A.B.



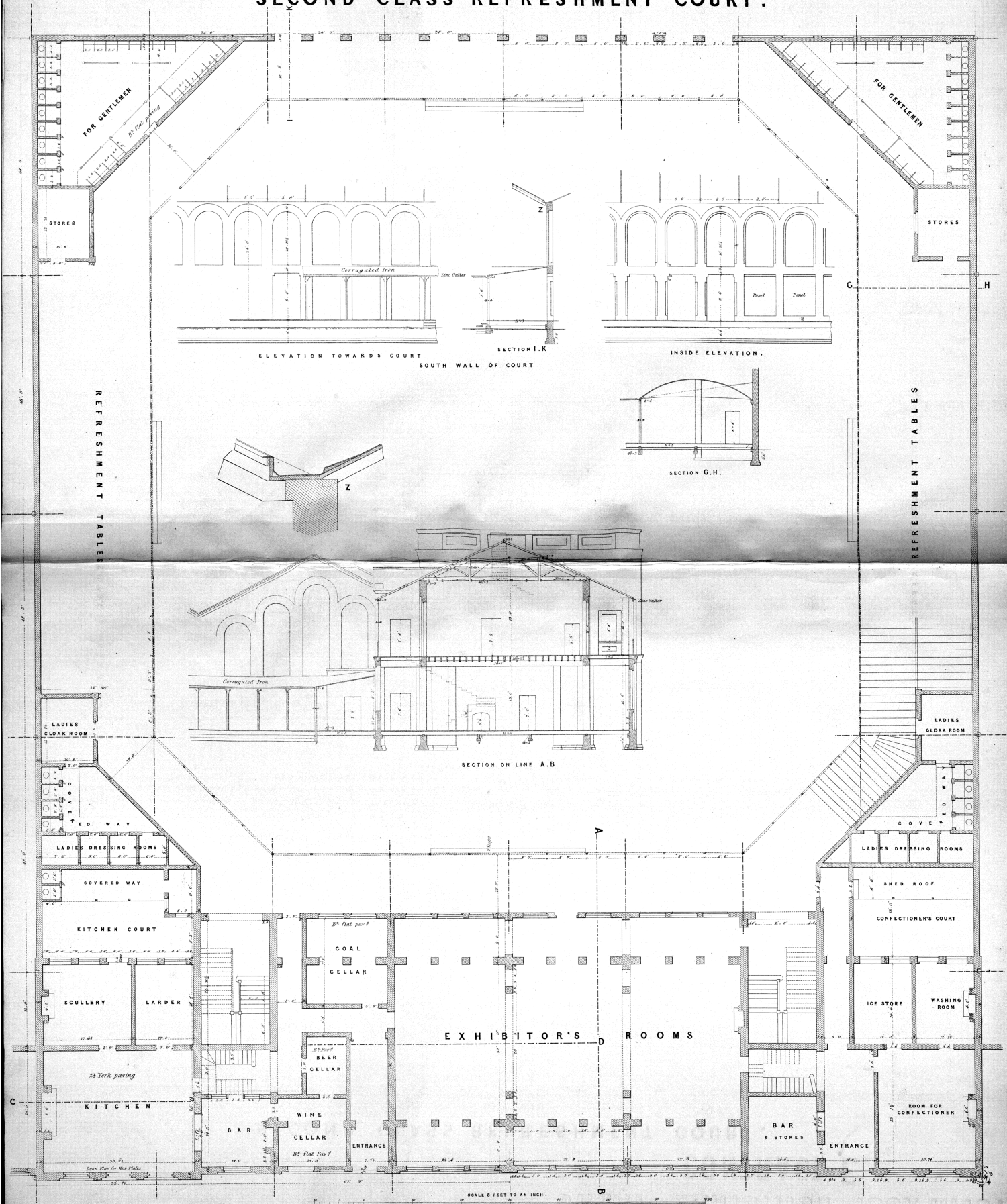
SECTION C.D.



DETAIL OF EAVES X.

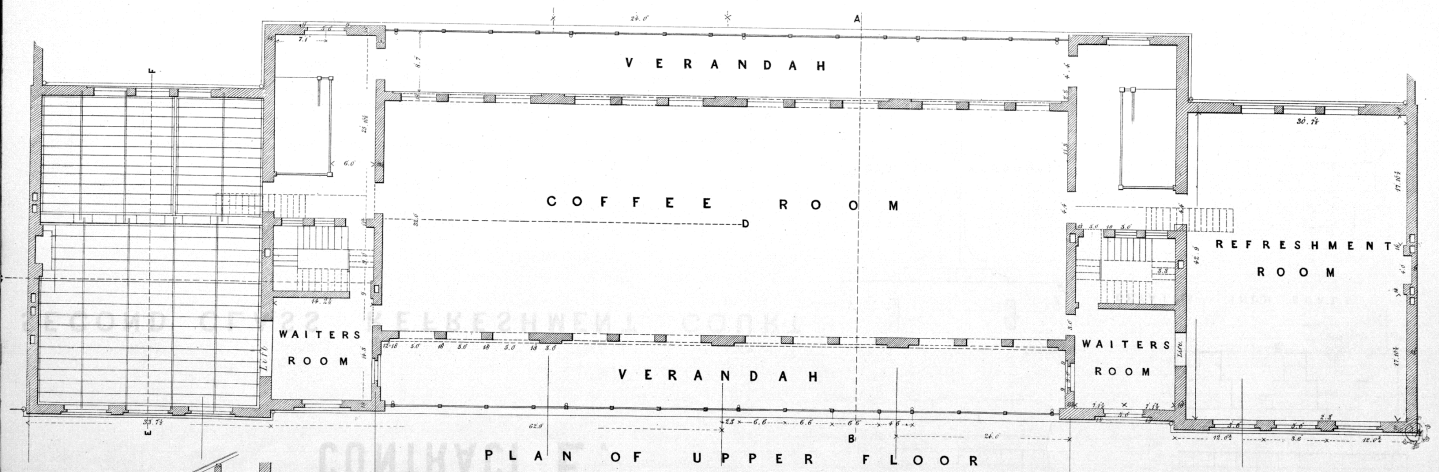
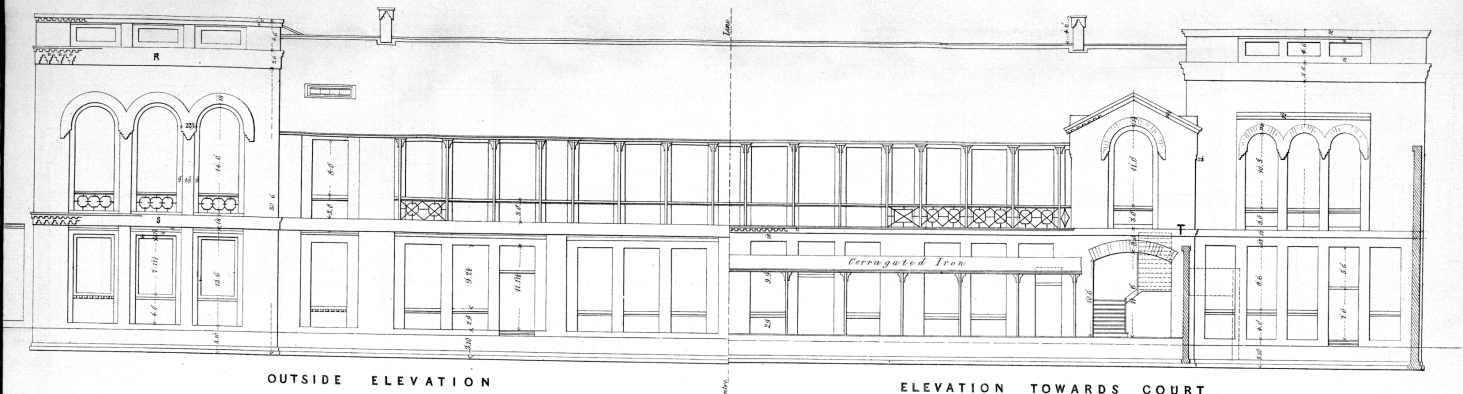
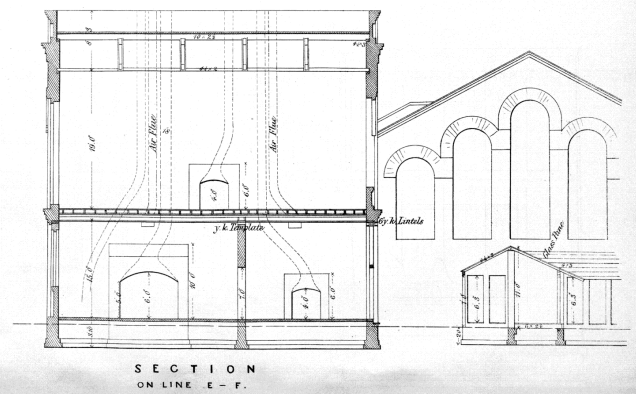
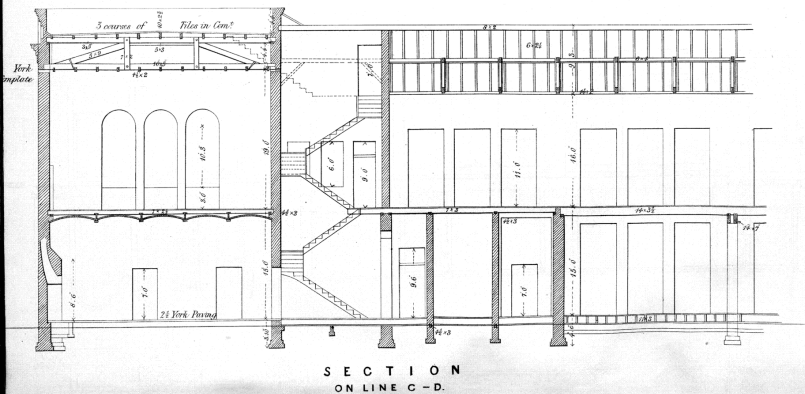
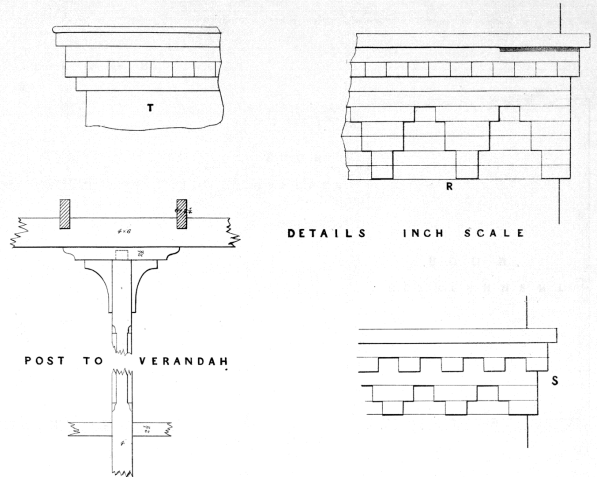
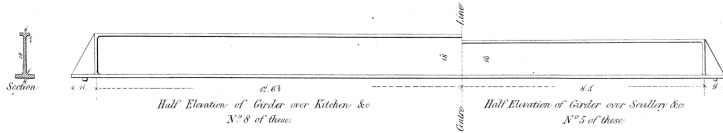
GREAT EXHIBITION 1851. N°10. CONTRACT E.

SECOND CLASS REFRESHMENT COURT.



GREAT EXHIBITION 1851. N° 11. CONTRACT E.

SECOND CLASS REFRESHMENT COURT

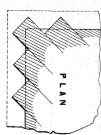


Droits réservés au Cnam et à ses partenaires

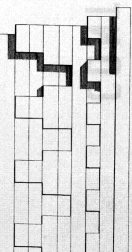
GREAT EXHIBITION 1851. No 12, CONTRACT F.

THIRD CLASS REFRESHMENT COURT.

DETAILS OF CORNICE AT P.

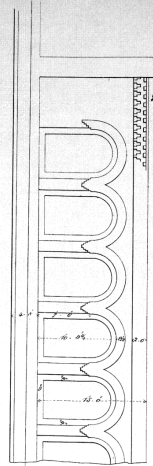


DETAILS OF CORNICE AT Q.

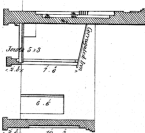


Arch Scale

OUTSIDE ELEVATION OF ENCLOSING WALL

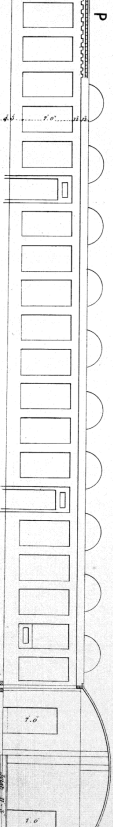
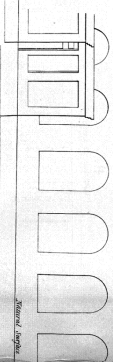


SECTION AT G.H.

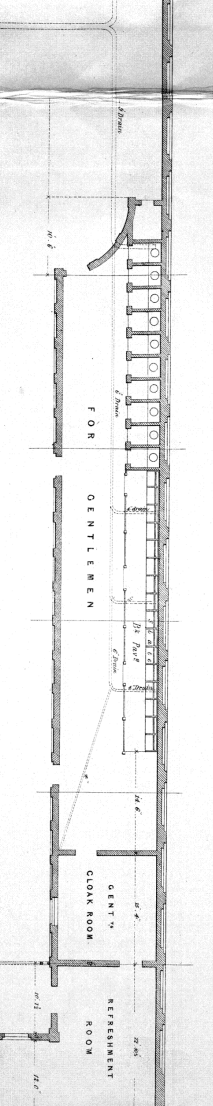
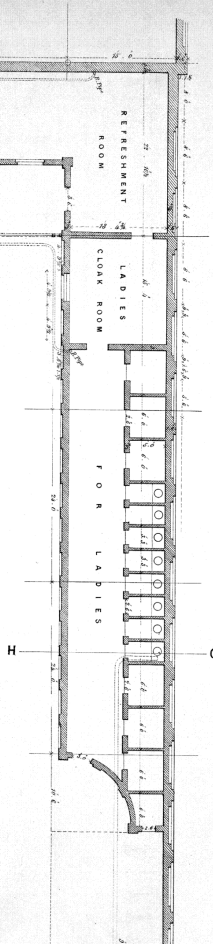


ELEVATION TOWARDS

THE COURT OF SCREEN WALL ON NORTH SIDE.

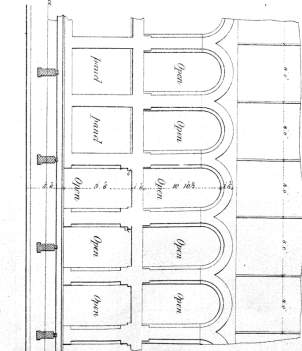


SECTION AT E.F.

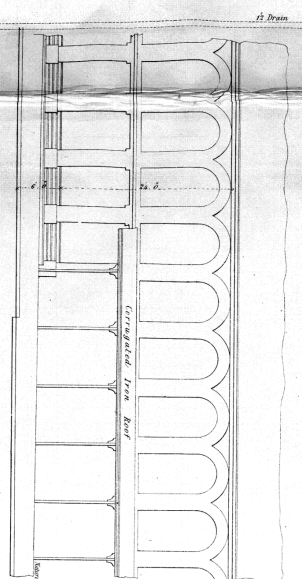


This Flooring to follow the inclination of the Ground
TABLES FOR REFRESHMENTS

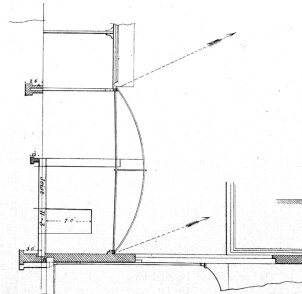
SECTION AT A.B.



INSIDE ELEVATION
OF SOUTH WALL OF COURT

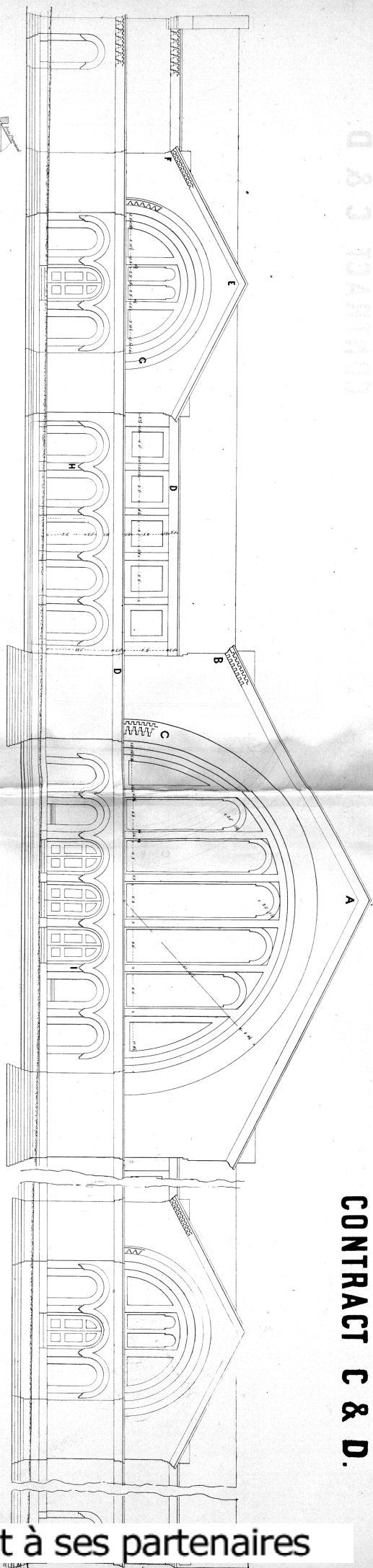


SECTION AT C.D.

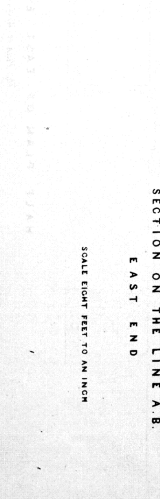
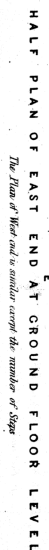
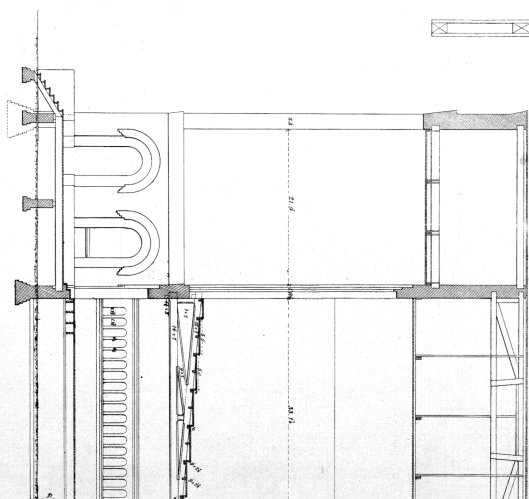
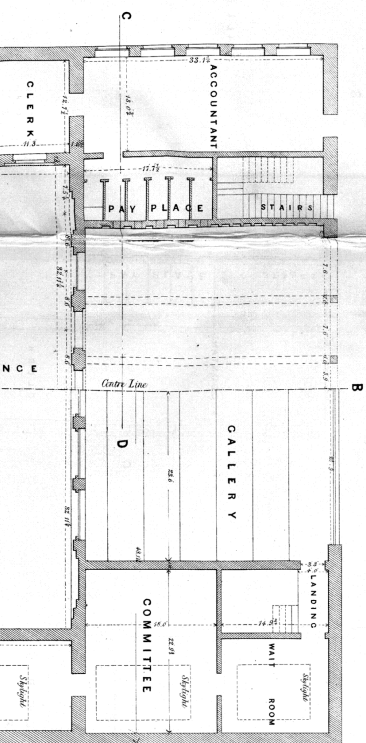
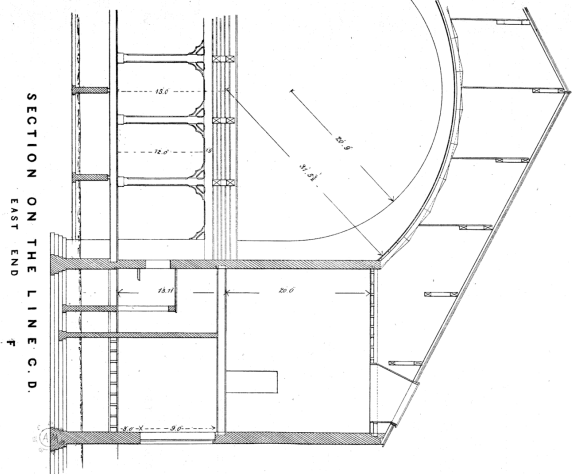
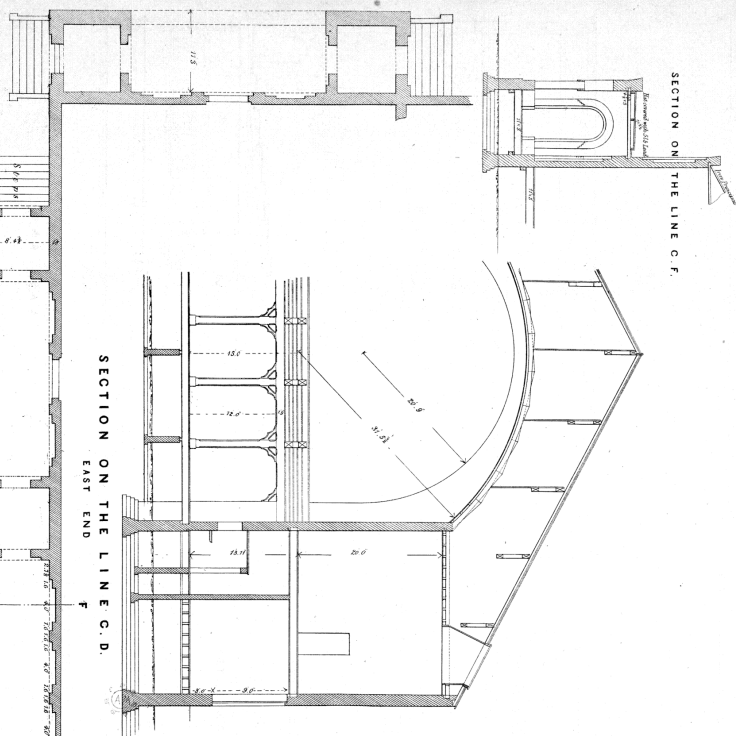
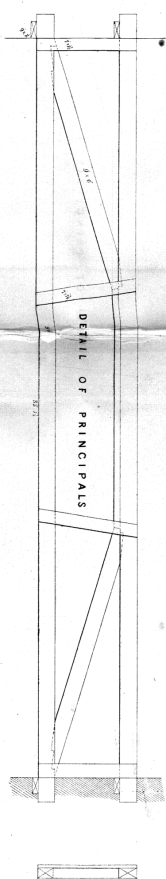


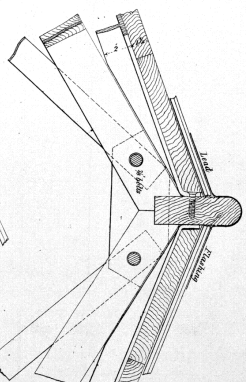
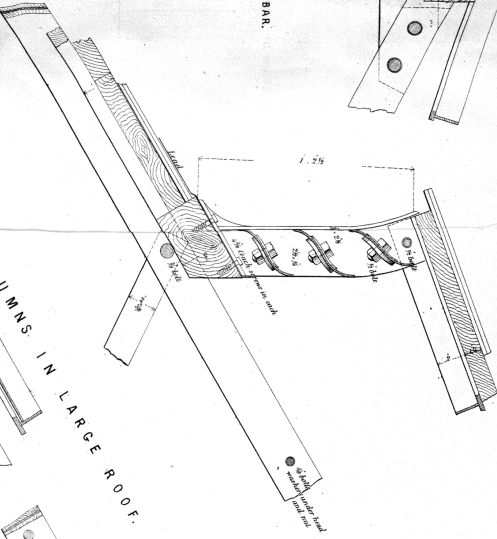
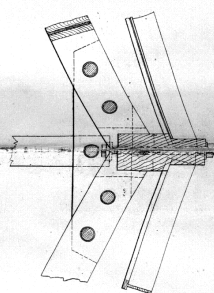
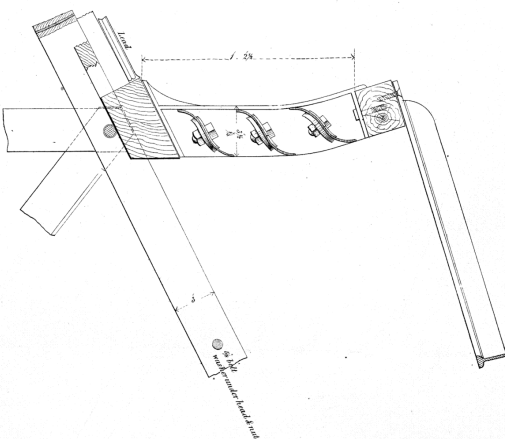
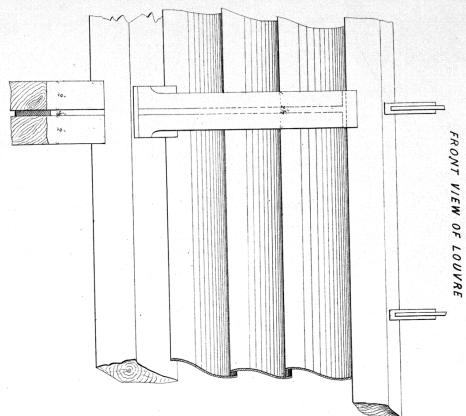
TABLES FOR REFRESHMENTS
The Flooring to follow the inclination of the Ground

Droits réservés au Cnam et à ses partenaires

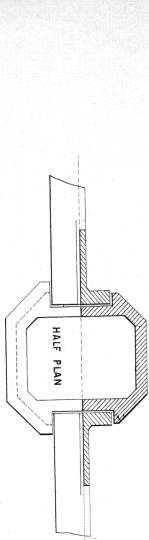


ELEVATION OF WEST END
The East End differs only in the depth of the Foundations & which see Section

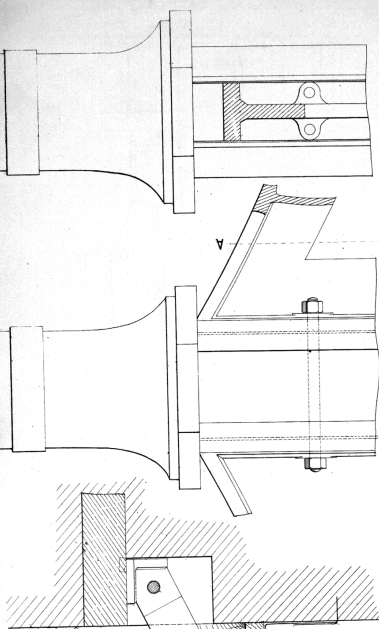
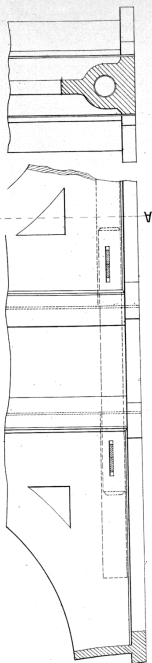




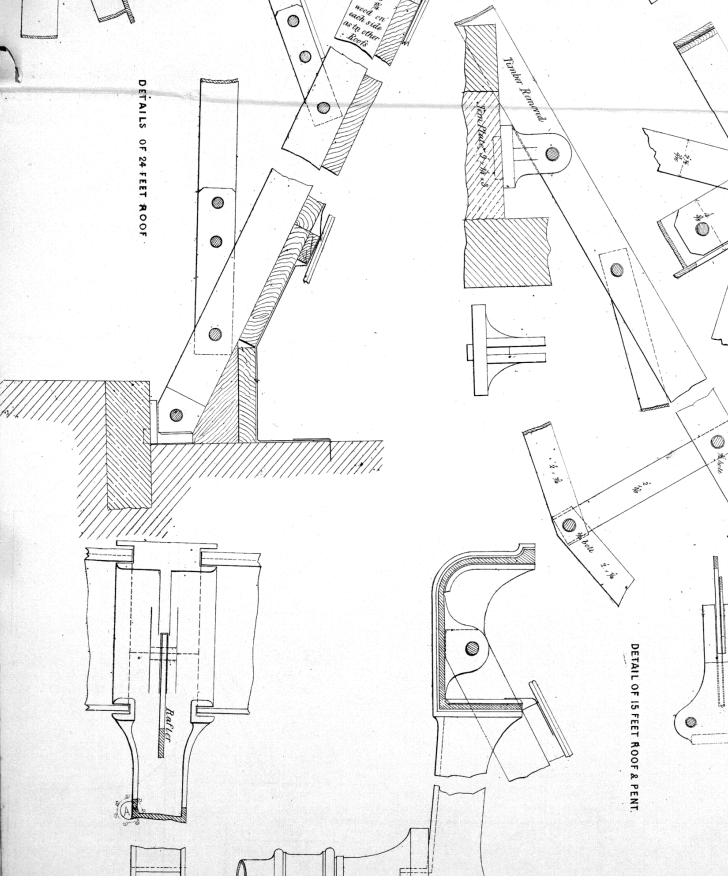
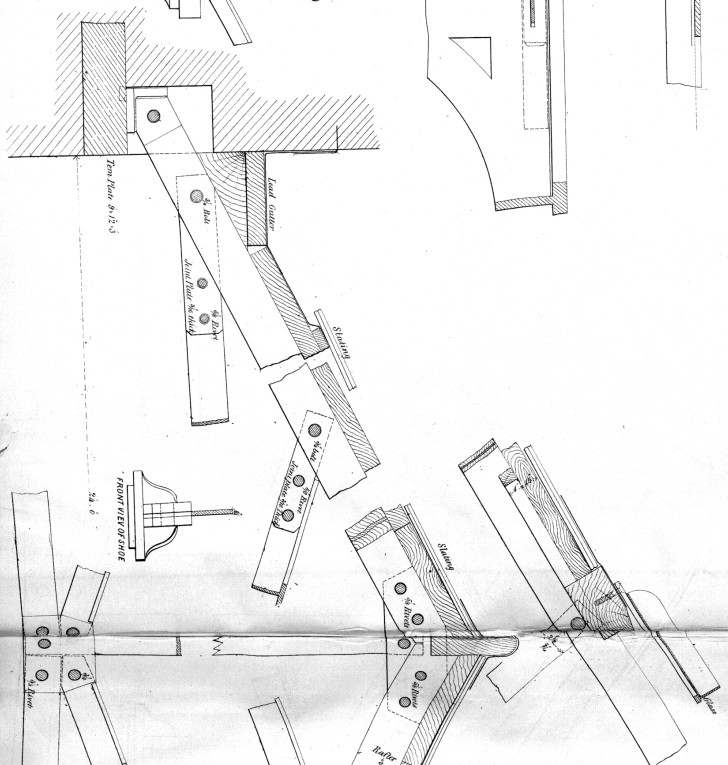
DETAIL OF COLUMN & GIRDER
HALF SECTION



SECTION ON A.A.
ELEVATION



GREAT EXHIBITION 1851. No. 15.
CONTRACTS A. B. C. D.



DETAIL OF 18 FEET ROOF & FENT.

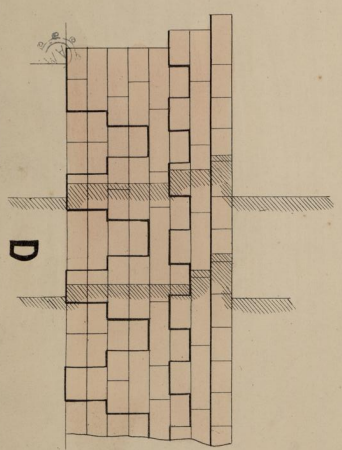
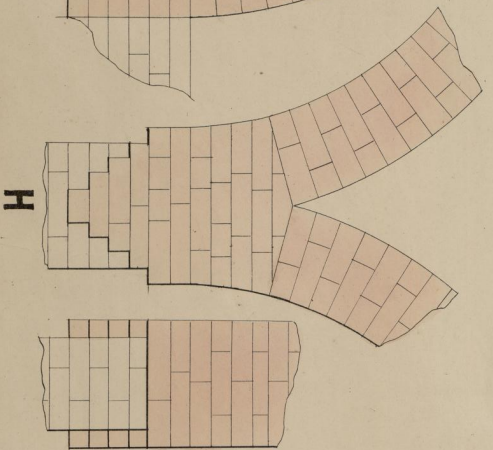
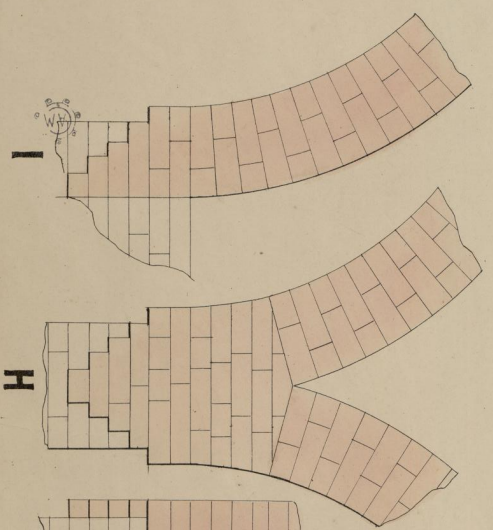
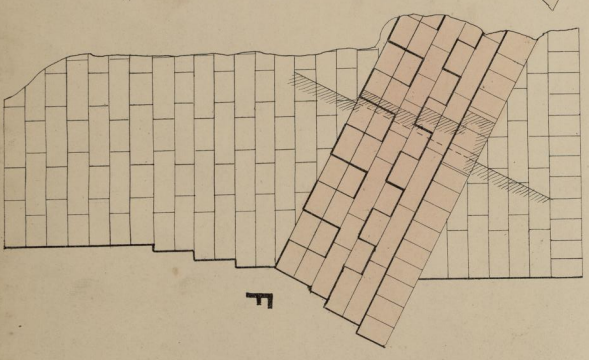
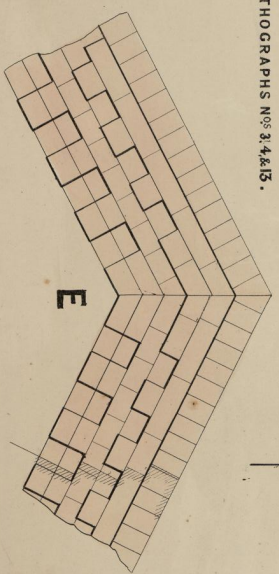
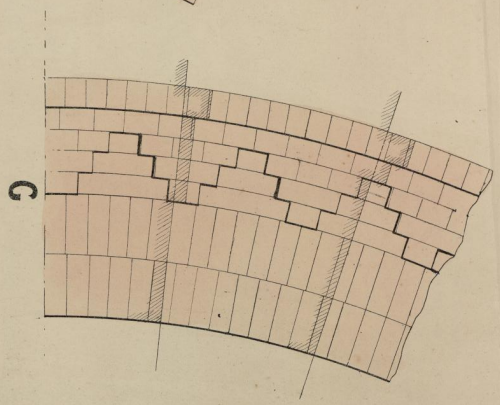
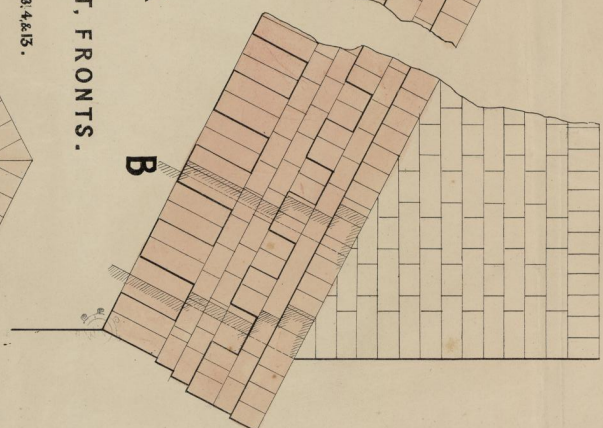
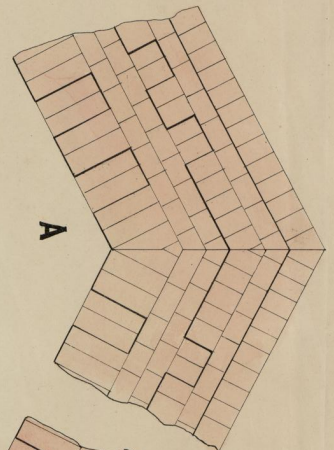
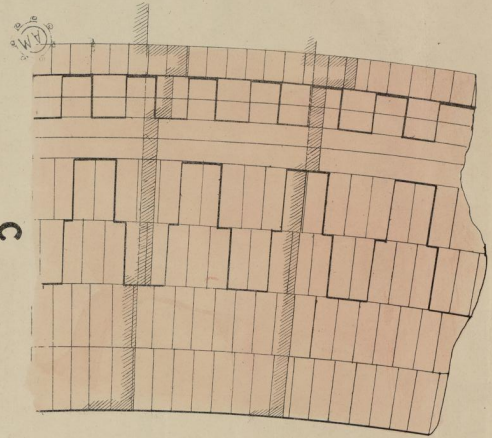
GREAT EXHIBITION 1851. N^o 16, **CONTRACTS A.B.C.D.E.F.**

DETAILS OF BRICKWORK

OF NORTH, SOUTH, EAST & WEST. FRONTS.

SEE LETTERS OF REFERENCE ON LITHOGRAPHS NOS 3, 4, & 5.

SCALE ONE FOOT TO AN INCH.





Droits réservés au Cnam et à ses partenaires